

## Moulding the flow of surface plasmons using conformal and quasiconformal mappings

This article has been downloaded from IOPscience. Please scroll down to see the full text article.

2011 New J. Phys. 13 033011

(<http://iopscience.iop.org/1367-2630/13/3/033011>)

View [the table of contents for this issue](#), or go to the [journal homepage](#) for more

Download details:

IP Address: 150.244.36.195

The article was downloaded on 07/06/2011 at 09:18

Please note that [terms and conditions apply](#).

## Moulding the flow of surface plasmons using conformal and quasiconformal mappings

P A Huidobro<sup>1,3</sup>, M L Nesterov<sup>1,4</sup>, L Martín-Moreno<sup>2</sup> and F J García-Vidal<sup>1</sup>

<sup>1</sup> Departamento de Física Teórica de la Materia Condensada, Universidad Autónoma de Madrid, E-28049 Madrid, Spain

<sup>2</sup> Instituto de Ciencia de Materiales de Aragón and Departamento de Física de la Materia Condensada, CSIC—Universidad de Zaragoza, E-50009 Zaragoza, Spain

E-mail: [paloma.arroyo@uam.es](mailto:paloma.arroyo@uam.es)

*New Journal of Physics* **13** (2011) 033011 (20pp)

Received 10 November 2010

Published 8 March 2011

Online at <http://www.njp.org/>

doi:10.1088/1367-2630/13/3/033011

**Abstract.** In this paper, we analyze how transformation optics recipes can be applied to control the flow of surface plasmons on metal–dielectric interfaces. We study in detail five different examples: a cylindrical cloak, a beam shifter, a right-angle bend, a lens and a ground-plane cloak. First, we demonstrate that only the modification of the electric permittivity and magnetic permeability in the dielectric side can lead to almost perfect functionalities for surface plasmons. We also show that, thanks to the quasi two-dimensional (2D) character of surface plasmons and their inherent polarization, applying conformal and quasiconformal mapping techniques allows one to design plasmonic devices in which only the isotropic refractive index of the dielectric film needs to be engineered.

<sup>3</sup> Author to whom any correspondence should be addressed.

<sup>4</sup> Current address: A Ya Usikov Institute for Radiophysics and Electronics, NAS of Ukraine, 12 Academician Proskura Street, 61085 Kharkov, Ukraine.

**Contents**

<b>1. Introduction</b>	<b>2</b>
<b>2. Transformation optics (TO) for plasmonics</b>	<b>3</b>
2.1. Cylindrical cloak for surface plasmon polaritons (SPPs)	4
2.2. SPP shifter	7
2.3. SPP bend	8
2.4. SPP lens	10
<b>3. Conformal and quasiconformal mappings for realistic models</b>	<b>11</b>
3.1. Isotropic SPP shifter	13
3.2. Isotropic SPP bend	14
3.3. Isotropic SPP lens	16
3.4. SPP ground-plane cloak	17
<b>4. Conclusions</b>	<b>18</b>
<b>Acknowledgments</b>	<b>19</b>
<b>Appendix. Optical conformal mapping</b>	<b>19</b>
<b>References</b>	<b>19</b>

**1. Introduction**

Transformation optics (TO) [1, 2] has attracted a great deal of interest over the last few years owing to its potential capability to control the flow of light. It establishes a procedure that provides us with expressions for the electromagnetic (EM) material parameters, dielectric permittivity and magnetic permeability, which need to be implemented in order to obtain a medium where EM waves propagate along desired trajectories. It is based on the mathematical equivalence between coordinate transformations and EM material parameters. As Maxwell's equations are form-invariant under coordinate transformations, a distorted geometry in an empty space can be interpreted as a medium in a Cartesian flat space [3]. A wide variety of optical devices have been designed by means of TO, such as invisibility cloaks [1, 4], beam shifters and dividers [5], beam bends [6, 7], waveguide bends [8], field concentrators [9], imaging devices [10, 11], and polarization splitters and rotators [12]. The permittivity and permeability tensors required by the TO technique are usually implemented using metamaterials, artificial materials that allow one to effectively mimic EM responses by repeating structured unit cells at a subwavelength scale [13, 14]. However, these parameters are generally anisotropic and inhomogeneous, so metamaterials usually rely on resonating structures to tailor EM parameters, a feature that limits the wavelength range of operation and causes losses. Conformal [4] and quasiconformal [15] coordinate transformations have been proposed to overcome this problem, since they reduce anisotropy to a minimum, yielding the possibility of fabricating transformation media out of isotropic dielectrics. Consequently, devices based on conformal transformations can be inherently broadband at optical frequencies. While conformal mappings are usually obtained analytically [16], quasiconformal mappings rely on numerical grid generation techniques. Recently, a method based on solving Laplace's equation with the appropriate boundary conditions has been proposed [17, 18] to generate quasiconformal mappings for different optical elements, such as cloaks and arbitrary waveguides.

It has recently been shown that TO recipes can be applied to efficiently mould the flow of surface plasmon polaritons (SPPs) [19]–[23]. SPPs are highly confined waves that propagate along a metal–dielectric interface. They are evanescent in the direction perpendicular to the interface and their field decays exponentially in the metal and dielectric sides. SPPs arise from the resonant interaction of light with the free electrons of the metal and result in a collective oscillation [24, 25]. SPPs are considered as good candidates for photonic circuitry as they provide large field enhancements at subwavelength scales [26, 27]. On the other hand, within the field of metamaterials, plasmonic structures have already been developed to achieve cloaking. They include, for instance, the cloaking from a SPP of an object surrounded by a circular array of point scatterers [28], the experimental verification of a plasmonic shell capable of cloaking subwavelength objects [29] and a two-dimensional (2D) cloak for SPPs consisting of layers supporting plasmonic modes with group velocity of opposite signs [30]. However, it is interesting to note that using the TO tools to manipulate SPPs is a very general technique that can yield different optical devices and new functionalities. Furthermore, as has been shown in previous work [19, 20], only the dielectric material next to the metal needs to be structured, whereas modifying the metal properties is not required in most cases.

In this paper, we consider the main features of TO as applied to SPPs and exemplify the theory by means of different TO devices for SPPs. We verify the results using the finite element method solver COMSOL MULTIPHYSICS. Firstly, we introduce the general methodology of TO in section 2 and apply it to the case of SPPs. In particular, we study the functionality of four different potential plasmonic devices (a cylindrical cloak, a parallel shifter, a right-angle bend and a lens) at a range of wavelengths through the optical range of the spectrum. Secondly, we consider realistic models based on conformal and quasiconformal mappings in section 3. We show that for these cases, only isotropic refractive indexes need to be implemented and we apply it to the parallel shifter, the right-angle bend, the lens and a ground-plane cloak for SPPs. Finally, section 4 summarizes the main contributions of this work.

## 2. Transformation optics (TO) for plasmonics

The TO framework provides tools for the design of EM media with desired functionalities. It is based on the fact that Maxwell’s equations are left invariant if a mapping is performed from an empty space with a distorted geometry (virtual space) to a medium characterized by  $\hat{\epsilon}$  and  $\hat{\mu}$  placed in a flat space (physical space). A 2D transformation  $x^i = x^i(x^{i'})$  between the virtual system,  $x^{i'} = \{x', y'\}$ , and the physical system,  $x^i = \{x, y\}$ , is described by means of its Jacobian matrix,

$$\hat{A} = \left( \frac{\partial x^i}{\partial x^{i'}} \right), \quad (1)$$

where the index  $i = 1, 2$ . As Maxwell’s equations are form-invariant, the empty-space equations in physical space can be interpreted as macroscopic equations for a medium placed in virtual space and characterized by the following EM parameters,

$$\hat{\epsilon}_{\text{TO}} = \epsilon_0 \frac{\hat{A} \hat{A}^T}{\det \hat{A}}; \quad \hat{\mu}_{\text{TO}} = \mu_0 \frac{\hat{A} \hat{A}^T}{\det \hat{A}}, \quad (2)$$

where  $\epsilon_0$  and  $\mu_0$  are the background EM parameters of the physical space. On the other hand, we can relate the metric tensor  $\hat{G} = (g_{ij})$  of the coordinate transformation to the inverse

Jacobian matrix,

$$\hat{G} = \frac{\partial x^k}{\partial x^i} \frac{\partial x^k}{\partial x^j} = (\hat{A}^{-1})^T \hat{A}^{-1}. \quad (3)$$

This allows us to re-express  $\hat{\epsilon}_{\text{TO}}$  and  $\hat{\mu}_{\text{TO}}$  in terms of the inverse metric tensor,  $\hat{G}^{-1} = \hat{A} \hat{A}^T$ , of the transformation,

$$\hat{\epsilon}_{\text{TO}} = \epsilon_0 \sqrt{g} \hat{G}^{-1}; \quad \hat{\mu}_{\text{TO}} = \mu_0 \sqrt{g} \hat{G}^{-1}, \quad (4)$$

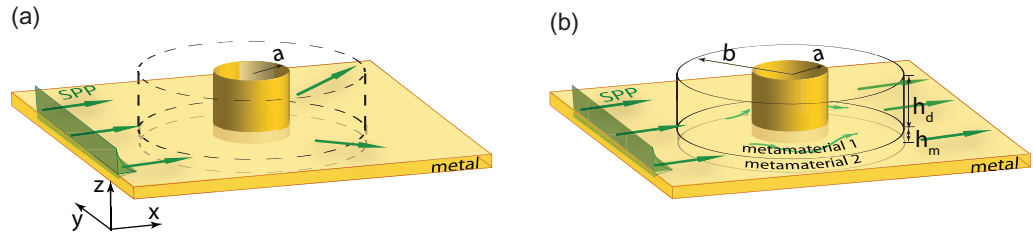
where  $g$  is the determinant of the metric,  $g = 1/(\det \hat{A})^2$ . In general, the metric tensor of any 2D coordinate transformation is a  $2 \times 2$  symmetric matrix. Then, as can be readily seen from (4),  $\hat{\epsilon}_{\text{TO}}$  and  $\hat{\mu}_{\text{TO}}$  are generally anisotropic. Moreover, they are inhomogeneous and vary throughout space according to the coordinate transformation.

Since TO relies on Maxwell's equations, it applies to all kinds of EM waves and, in particular, to SPPs. However, we need to bear in mind the fact that SPPs are surface waves propagating along a metal–dielectric interface with a field distribution that is evanescent in the direction perpendicular to the interface. Therefore, an infinite number of 2D coordinate transformations should be performed, in principle, in planes parallel to the metal–dielectric interface in order to operate over the whole plasmonic field. As the SPP field extends into the dielectric and the metal, these 2D coordinate transformations should be implemented at both sides of the interface. Owing to the fact that the SPP decay length in the metal (skin depth) is of the order of a few tens of nanometers at optical wavelengths, a manipulation of the metal properties would be needed at a nanometer scale. However, it has been shown [19] that a more feasible approach that consists of modifying the EM properties of the dielectric side only indeed gives very accurate results, while control over the metal is not actually required. To illustrate the direct application of TO to SPPs and the impact of manipulating only the dielectric side, we have studied the dependence of the efficiency on the wavelength for four different TO devices for SPPs: a cylindrical cloak, a parallel shifter, a right-angle bend and a lens.

### 2.1. Cylindrical cloak for surface plasmon polaritons (SPPs)

As a first example of TO applied to plasmonics, let us consider a 3D cylindrical cloak for SPPs traveling along the interface between a metal characterized by permittivity  $\epsilon_m$  and vacuum [19]. Figure 1(a) shows a SPP that scatters with a metallic cylinder of radius  $a$  placed on the surface. A cloak placed around the cylinder (see figure 1(b)) renders the object invisible by suppressing any scattering from it. A 2D invisibility cloak was the first proposal of TO applications [1, 4] as well as the first experimental realization [31]. The cloak is designed by taking a physical space that has a hole of radius  $a$  surrounded by a compressed region of radius  $b$  and then making a transformation to a Cartesian undistorted space. A wave traveling in physical space will follow trajectories that surround the hole so that it appears to have travelled in straight lines as it would in the virtual—undistorted—space. In order to design a 3D invisibility cloak for SPPs, we take a plane parallel to the metal surface and make the 2D radial transformation  $r(r') = b/(b-a)r' + a$  in the shell  $a < r < b$  (see the geometry of the cloak in the inset of figure 2(a)). In Cartesian coordinates, the transformation reads

$$x = r(r') \frac{x'}{r'}; \quad y = r(r') \frac{y'}{r'}; \quad z = z'. \quad (5)$$



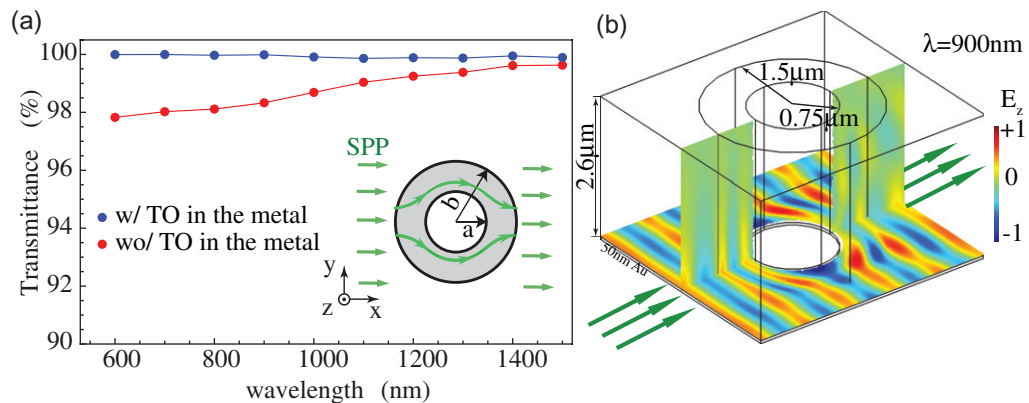
**Figure 1.** TO is used to cloak a cylinder to a SPP. (a) A SPP is propagating along a gold–vacuum interface and scatters on a metallic cylinder of radius  $a$ . The plasmonic field intensity, shown schematically, decays exponentially away from the interface. (b) Scattering losses are suppressed by placing a cloak of outer radius  $b$  around the cylinder. The optical parameters needed to cloak the cylinder are calculated using TO and implemented in a cylindrical shell  $a < r < b$  of height  $h_d$  in the dielectric side (*metamaterial 1*) and in a shell of height  $h_m$  in the metal (*metamaterial 2*). As the decay length of the SPP is larger in the dielectric than in the metal and a major part of the SPP energy is carried in the dielectric,  $h_m$  is much smaller than  $h_d$ .

According to the TO equation (4), the EM parameters of the transformation medium are the following,

$$\hat{\epsilon}_{\text{TO}}/\epsilon_0 = \hat{\mu}_{\text{TO}}/\mu_0 = \begin{pmatrix} \epsilon_r \frac{x^2}{r^2} + \epsilon_\theta \frac{y^2}{r^2} & (\epsilon_r - \epsilon_\theta) \frac{xy}{r^2} & 0 \\ (\epsilon_r - \epsilon_\theta) \frac{xy}{r^2} & \epsilon_r \frac{y^2}{r^2} + \epsilon_\theta \frac{x^2}{r^2} & 0 \\ 0 & 0 & \epsilon_z \end{pmatrix}, \quad (6)$$

where  $\epsilon_r = \mu_r = (r - a)/r$ ,  $\epsilon_\theta = \mu_\theta = r/(r - a)$  and  $\epsilon_z = \mu_z = [b/(b - a)]^2(r - a)/r$ . These parameters are highly anisotropic and approach singular values at the inner radius of the cloak ( $\epsilon_{xx}, \epsilon_{yy} \rightarrow +\infty$ ,  $\epsilon_{xy} \rightarrow -\infty$ ,  $\epsilon_z \rightarrow 0$ ). If we want to operate on a SPP, we need to cloak the field at the dielectric and metal sides, as illustrated in figure 1(b). At the dielectric side, we implement the parameters  $\hat{\epsilon} = \hat{\epsilon}_{\text{TO}}$  and  $\hat{\mu} = \hat{\mu}_{\text{TO}}$  in a cylindrical shell of radii  $a$  and  $b$  with a height,  $h_d$ , larger than the vacuum decay length of the SPP. On the other hand, at the metal side, the EM tensors need to be modified,  $\hat{\epsilon} = \hat{\epsilon}_{\text{TO}} \cdot \epsilon_m$  and  $\hat{\mu} = \hat{\mu}_{\text{TO}}$ , in a cylindrical shell of the same radii but with a height  $h_m$  larger than the skin depth. If we cloaked its entire field, an incident SPP would emerge at the other side as if it had traveled through free space.

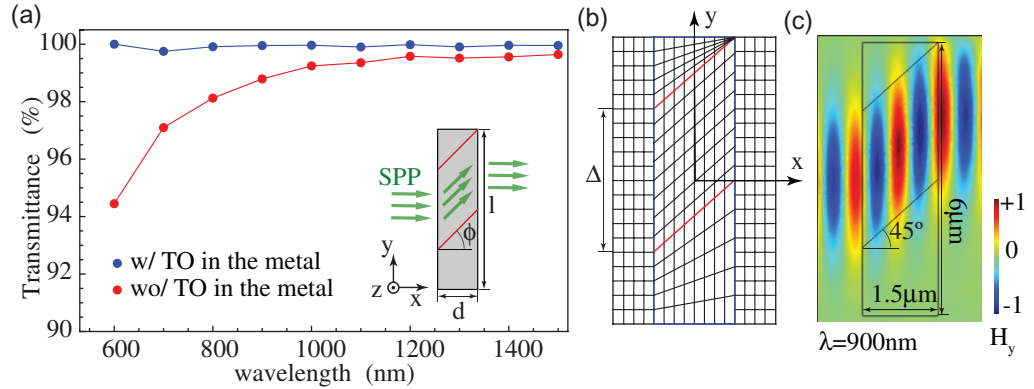
Figure 2 shows the results obtained from 3D simulations. To study the effectiveness of the plasmonic device, we have considered the transmittance of SPPs through the cloak and its scattering properties. We have measured the transmittance from one side of the cloak to the other as the ratio of the incident to the transmitted power flow. To isolate the effect of the TO medium, losses have been neglected throughout this work by setting the imaginary part of the metal dielectric constant to zero. Since losses are absent, 100% transmittance means that the whole plasmonic field is guided around the cylinder without any back-scattering. In the simulations, a SPP at a wavelength between 600 and 1500 nm and traveling through a gold–vacuum interface impinges on a cloak of size  $a = b/2 = 5/6\lambda$ . The transmittance spectrum is plotted in figure 2(a) for two cases: with and without introducing a metamaterial in the metal side (blue and red lines, respectively). The transmittance of the cloak in the ideal situation (blue line) where TO



**Figure 2.** Simulation results of a 3D cylindrical cloak for a SPP. (a) Transmittance (ratio of the incident power flow to the transmitted power flow) through the cloak for SPPs at different wavelengths. The blue and red lines show the case with and without placing a transformation medium in the metal side, respectively. The in-plane size of the cloak is scaled with the wavelength  $a = b/2 = 5/6\lambda$ . The height of the cloak in the dielectric side,  $h_d$ , is much larger than the vacuum decay length at a given wavelength and is chosen for convergence. The height of the cloak in the metal side,  $h_m$ , is 50 nm at all wavelengths since the skin depth of the SPP is very similar over the wavelength range and amounts to 20–30 nm. The inset shows the geometry layout from a top view. (b) The  $z$ -component of the electric field of a SPP at 900 nm traveling through a cloak without applying TO in the metal side.

parameters are implemented in the metal along with the dielectric material is higher than 99% over the whole wavelength range. On the other hand, the transmittance when the metal is left untouched (red line) increases from 97% at 600 nm to 99% at 1500 nm. As the wavelength increases, the blue and red curves lie closer. The reason for this is that while the skin depth is approximately constant over the whole spectrum (around 20–30 nm), the vacuum decay length increases with the wavelength, varying from 250 nm for a SPP at 600 nm to  $4 \mu\text{m}$  at 1500 nm. Thus, for shorter wavelengths, the part of the SPP energy carried within the metal is larger. However, although the effectiveness of the cloak is affected by the lack of cloaking of the field that resides in the metal, it is very good even at short wavelengths. The performance of the cloak for a SPP at  $\lambda = 900 \text{ nm}$  is illustrated in figure 2(b), which shows how the SPP field is smoothly guided around the metallic cylinder.

Finally, a study of the scattering properties is needed for a complete analysis of the invisibility cloak. By inspection of the scattered field distribution, we have seen that, when the TO recipe is not implemented in the metallic side, around 20% of the field amplitude is scattered in the forward direction. As a result, the wave front of the SPP when passing through the simplified cloak is slightly modified. In accordance with [32], phase distortions occur for the simplified cloak and perfect cloaking is not achieved. Nevertheless, as seen in figure 2, most of the plasmonic field is guided around the cylinder. On the other hand, we have checked the scattering properties of all of the devices shown in this work. We have found that these effects are only relevant in the case of the cylindrical cloak. For the sake of brevity, we mention this fact here and not when discussing each device. Therefore, in the rest of the paper, we present



**Figure 3.** The 3D simulation results of a parallel shifter. A Gaussian SPP of width  $\Delta$  impinges on the device and experiences a shift of  $\phi = 45^\circ$ . (a) Transmittance curve of the shifter for SPPs at different wavelengths. The blue and red lines show the case with and without placing a transformation medium in the metal side, respectively. The TO parameters are implemented in a slab sized  $d \times l \times h_d$  in the dielectric side and, only for the blue line, in a slab  $d \times l \times h_m$  within the metal (see the inset panel for geometry parameters). The transmittance through the shift is measured as the ratio of the power flow that impinges on the entrance face within  $-\Delta/2 < y < \Delta/2$  to the power flow that exits within  $0 < y < \Delta$ . (b) Coordinate transformation given by (7). (c) Top view of the magnetic field component of a SPP at 900 nm traveling through a shifter without applying TO in the metal side. Note that the two lines at  $45^\circ$  are simply a guide to the eye and do not represent a physical boundary.

the transmittance and the images of the EM field as criteria for quantifying the performance of the SPP devices.

## 2.2. SPP shifter

Another potential plasmonic device is the parallel shifter [19], which acts on an incident beam by translating it perpendicularly to its propagation direction. To design a 2D shifter, we take a rectangular region sized  $d \times l$  (see the inset of figure 3(a)) and map a Cartesian grid to a grid that is tilted at an angle  $\phi$  [5],

$$x = x'; \quad y = y' + a(x' + d); \quad z = z', \quad (7)$$

where  $a$  determines the tilt angle  $a = \tan \phi$ . The map of the transformation is illustrated in figure 3(b). In contrast to the transformation leading to the cylindrical cloak (5), the transformation (7) is discontinuous at the frontiers of physical space, a feature that allows the transfer of the modification of the fields inside the TO medium to the wave that exits it. Because the transformed boundary is a combination of rotation and translations of the original boundary, the discontinuity does not cause reflections at the limits of the TO medium [16]. Following the TO equations (4), the EM parameters of the transformation medium are obtained,

$$\hat{\epsilon}_{\text{TO}}/\epsilon_0 = \hat{\mu}_{\text{TO}}/\mu_0 = \begin{pmatrix} 1 & a & 0 \\ a & 1+a^2 & 0 \\ 0 & 0 & 1 \end{pmatrix}. \quad (8)$$



A 3D SPP parallel shifter should, in principle, be composed of a slab in the dielectric side sized  $d \times l \times h_d$  with permittivity  $\hat{\epsilon}_{\text{TO}}$  and permeability  $\hat{\mu}_{\text{TO}}$  along with a slab in the metal film of dimensions  $d \times l \times h_m$  and parameters  $\hat{\epsilon} = \hat{\epsilon}_{\text{TO}} \cdot \epsilon_m$  and  $\hat{\mu} = \hat{\mu}_{\text{TO}}$ . Again, the height of the slabs at each side must be larger than the SPP decay length in that medium. In this case, the TO medium parameters are anisotropic but homogeneous and take non-singular values.

Figure 3(a) shows the transmittance spectrum resulting from 3D simulations. A SPP with a Gaussian profile of width  $\Delta = l - 2ad$  propagates in the  $x$ -direction and impinges on the transformation medium. Thus, it experiences a shift of  $\phi = 45^\circ$  (we set  $a = 1$ ) perpendicular to its propagation, in the  $y$ -direction, and exits the shifter propagating along a direction parallel to the original incident path. The in-plane size of the device is given by  $l = 20/3\lambda$  and  $d = l/4$ . The blue and red spectra in figure 3(a) show the transmittance through the beam shifter with and without introducing a transformation medium in the metal side, respectively. In the ideal situation (blue line), 100% of the SPP power flow is shifted over the whole spectra, whereas in the approximation (red line) the transmission is lowered due to the fact that the fraction of the SPP energy that is carried inside the metal is not shifted. At 600 nm, the transmission is lowered to 95.5%, whereas at 800 nm, it amounts to 98.5%. On the other hand, for wavelengths larger than 900 nm the red and blue lines differ by less than 1% because most of the SPP energy is carried outside the metal. Therefore, manipulation of the metal is not required because the performance of the SPP shifter is very good when the TO parameters are introduced in the dielectric side in the whole optical range. The effect of the shifter on an SPP can be seen in figure 3(c), where the field distribution of an SPP at  $\lambda = 900$  nm undergoing a  $45^\circ$  shift is shown. As a consequence of the shift, the outgoing propagation direction is  $1.5 \mu\text{m}$  from the incident path. Note that the SPP wave fronts nicely follow the vertical lines of the transformation map shown in (b).

### 2.3. SPP bend

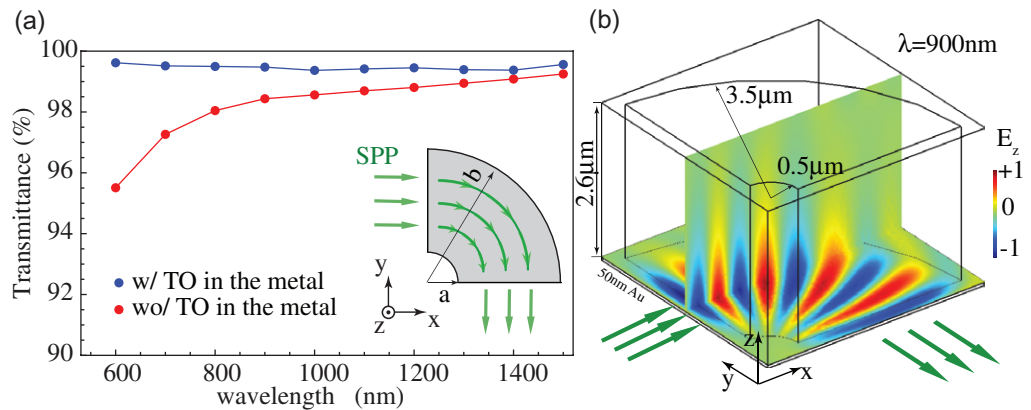
The next plasmonic element we consider here is a right-angle bend, a device that rotates the propagation direction of an incident SPP by  $\frac{\pi}{2}$  (see the inset of figure 4(a)). We start by describing a 2D beam bend, which is designed by transforming a squared region of side  $b$  in a Cartesian grid into a polar grid of squared cross-section  $b \times b$  [7]. In order to bend a beam that propagates in the  $x$ -direction by  $\frac{\pi}{2}$ , so that it exits the device propagating in the  $y$ -direction, the appropriate transformation is

$$r = y'; \quad \phi = \frac{\pi}{2b}(b - x'); \quad z = z', \quad (9)$$

with  $r = (x^2 + y^2)^{1/2}$  and  $\phi = \arctan(y/x)$ . Again, this transformation is not continuous at the boundaries of the domain. The EM parameters retrieved from TO equations (4) are expressed in Cartesian coordinates according to (6) with

$$\epsilon_r = \frac{2b}{\pi r}; \quad \epsilon_\theta = \frac{\pi r}{2b}; \quad \epsilon_z = \frac{2b}{\pi r}. \quad (10)$$

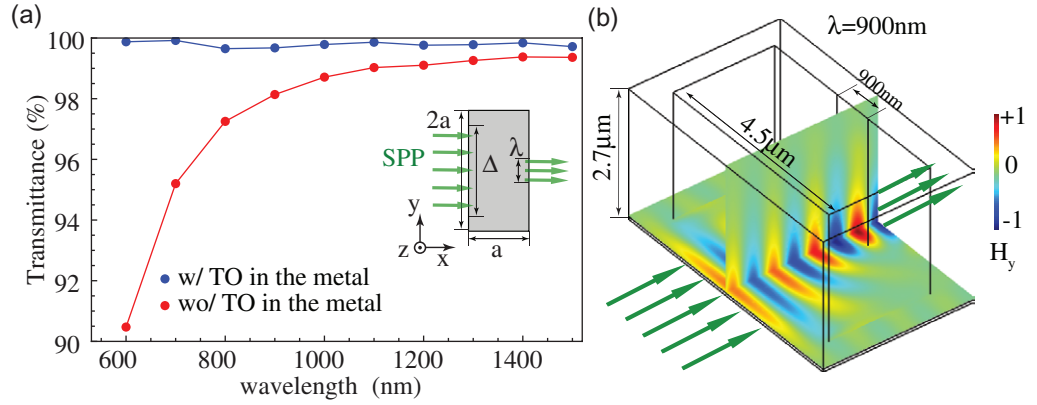
These tensors are singular at  $r = 0$  ( $\epsilon_r, \epsilon_z \rightarrow +\infty$  and  $\epsilon_\theta \rightarrow 0$ ). In order to avoid the divergence at  $r = 0$ , we limit the extreme values of the parameters by limiting the radius to vary from an inner value  $r = a$  to the outer value  $r = b$ . Then the width of the bend is  $\Delta = b - a$  and the curvature radius is  $\rho = (a + b)/2$ . According to our methodology, to design a SPP right-angle bend, we need to perform the coordinate transformation in the cylindrical shell comprised



**Figure 4.** 3D simulation results of a SPP right-angle bend. (a) Transmission through the bend for SPPs of Gaussian profiles (width  $\Delta$ ) at different wavelengths. The blue and red lines show the case with and without placing a transformation medium in the metal side, respectively. The bend curvature radius is  $\rho = 5/2\lambda$  and the width is  $\Delta = 10/3\lambda$ . The inset shows the geometry layout from a top view. (b) The  $z$ -component of the electric field of a SPP at 900 nm traveling through the bend without applying TO in the metal side.

between  $r = a$ ,  $r = b$ ,  $\phi = 0$  and  $\phi = \frac{\pi}{2}$ . Ideally, we would need to implement the parameters  $\hat{\epsilon}_{\text{TO}}$  and  $\hat{\mu}_{\text{TO}}$  given by (6) and (10) within the dielectric material up to a height of  $h_{\text{d}}$ , while the metal optical properties should be modified following the expressions  $\hat{\epsilon} = \hat{\epsilon}_{\text{TO}} \cdot \epsilon_{\text{m}}$  and  $\hat{\mu} = \hat{\mu}_{\text{TO}}$  in a region of height  $h_{\text{m}}$ .

Figure 4(a) shows the transmittance curve of a SPP bend for two different situations: with and without implementing the TO parameters in the metal side (blue and red lines, respectively). The transmittance through the bend is calculated from simulations where SPPs at wavelengths ranging from 600 to 1500 nm are launched into the entrance of a bend of curvature radius  $\rho = \frac{5}{2}\lambda$ . The field distribution results of a simulation of a SPP at  $\lambda = 900$  nm propagating in the  $x$ -direction and traveling through a right angle bend of radius  $\rho = 1.5 \mu\text{m}$  is shown in figure 4(b). The transmittance is obtained from measurements of the power flow at the entrance and exit faces of the bend. The blue line in the transmittance curve corresponds to the ideal case where the TO parameters are implemented both in the metal and dielectric sides. The transmission is over 99% for all wavelengths. On the other hand, the red line follows the transmittance through the bend when only the dielectric side is modified. It is clearly seen that this is indeed a very good approximation, as the transmission is always higher than 95%, approaching the same results as the ideal simulations at large wavelengths. For wavelengths larger than 900 nm, the blue and red curves differ by only 2% or less, meaning that by not structuring the metal side, less than 2% of the SPP power flow will be lost. On the other hand, for short wavelengths (600–800 nm), the transmittance of the approximate situation is around 4% lower than the transmittance of the ideal blue curve, a value that corresponds to the fraction of the SPP energy that is contained in the metal. Therefore, we have shown that in the approximate but more feasible situation of structuring only the dielectric side, the performance of the SPP bend is very good over the entire wavelength range considered. However, in some cases, the SPP wave fronts might suffer some distortions, even though the transmittance is still very high.



**Figure 5.** Simulation results of a 3D SPP lens. A SPP exhibiting a Gaussian profile of width  $\Delta$  and propagating in the  $x$ -direction impinges on the lens, where it is focused to a width of the order of the wavelength. (a) Transmittance spectra through the lens for two cases: with and without placing a transformation medium in the metal side (blue and red lines, respectively). The transmittance is measured as the ratio of the power flow incident on the left to the power flow that exits within a wavelength width. The in-plane size of the lens is  $a \times 2a$ , with  $a = 2.5\lambda$ , while the width of the incident beam is  $\Delta = 3.75\lambda$  (see the inset). (b) 3D view of the  $y$ -component of the magnetic field of a SPP at 900 nm traveling through the lens. In this simulation, the transformation medium was placed in the dielectric side only. Note that the lines parallel at the exit face separated by 900 nm constitute an auxiliary element to measure the transmittance and do not represent a physical boundary.

#### 2.4. SPP lens

Finally, we consider a plasmonic lens capable of focusing an incident Gaussian SPP of a finite width. As described in [7], transforming a semi-circular region of radius  $a$  into a rectangular region sized  $a \times 2a$  leads to a 2D rectangular lens whose focal point is located at the center of its exit face (see the schematic layout in the inset of figure 5(a)). Assuming an incident wave from the left, we place the lens in the  $x$ - $y$  plane in the region defined by  $-a \leq x \leq 0$  and  $-a \leq y \leq a$ . For such a geometry, the appropriate transformation is found to be

$$x = \frac{ax}{\sqrt{a^2 - y^2}}; \quad y = y'; \quad z = z'. \quad (11)$$

The TO equations (4) yield the following EM tensors in Cartesian coordinates,

$$\hat{\epsilon}_{\text{TO}}/\epsilon_0 = \hat{\mu}_{\text{TO}}/\mu_0 = \begin{pmatrix} \frac{x^2 y^2 a^{-1} (a^2 - y^2)^{-1} + a}{\sqrt{a^2 - y^2}} & \frac{xy}{a\sqrt{a^2 - y^2}} & 0 \\ \frac{xy}{a\sqrt{a^2 - y^2}} & \frac{\sqrt{a^2 - y^2}}{a} & 0 \\ 0 & 0 & \frac{\sqrt{a^2 - y^2}}{a} \end{pmatrix}. \quad (12)$$

These parameters are inhomogeneous and anisotropic, and they take singular values at the boundaries of the device. As in the previous examples, the lens for SPPs consists of a rectangular slab sized  $a \times 2a \times h_d$  and placed on top of the metal film, with parameters  $\hat{\epsilon}_{\text{TO}}$  and  $\hat{\mu}_{\text{TO}}$ . In principle, a rectangular slab of dimensions  $a \times 2a \times h_m$  and parameters  $\hat{\epsilon}_{\text{TO}} \cdot \epsilon_m$  and  $\hat{\mu}_{\text{TO}}$  should be implemented in the metal side.

Figure 5 shows the results obtained from 3D simulations of a Gaussian SPP of width  $\Delta$  traveling through the lens. As a result, the SPP is focused at the exit side of the device and continues to propagate in cylindrical wave fronts. Panel (a) shows the transmittance through the device as a function of the SPP wavelength for a quantitative analysis of the lens effectiveness in two situations: when the TO parameters are or are not implemented in the metal side (blue and red curves, respectively). In the ideal case where transformation media are placed in the metal and dielectric sides, the transmittance is close to 100% at all wavelengths. On the other hand, the red line shows that the approximation consisting of not modifying the metal side is very good for wavelengths above 900 nm because in that wavelength range the transmittance lies above 98%. For wavelengths below 900 nm, the transmittance is lowered up to 8% compared with the ideal case because for shorter wavelengths there is a higher fraction of the SPP energy contained in the metal. However, the field patterns at these wavelengths (not shown here) reveal that the wave propagation and focusing is still very good. Panel (b) shows a plot of the field for a SPP at 900 nm traveling through the lens. While the SPP travels a distance of  $a = 2250$  nm, its wave fronts are smoothly focused on a spot of the order of its wavelength.

### 3. Conformal and quasiconformal mappings for realistic models

The coordinate transformations we have considered so far present some technical problems when it comes to practical realizations as they generally yield highly anisotropic  $\hat{\epsilon}$  and  $\hat{\mu}$ . However, if we choose an appropriate coordinate transformation by imposing some mathematical requirements, isotropic EM parameters may be obtained. This means that only isotropic dielectrics would be necessary to construct devices, reducing losses and opening up the possibility of broad-band performances. In particular, conformal and quasiconformal transformations give rise to isotropic material parameters, yielding easier implementations of transformation media based on isotropic dielectrics. Conformal mappings were first investigated in [4], where an invisibility device was designed by applying a transformation in the complex plane to Helmholtz's equation. This concept was also applied to designing other isotropic devices, such as arbitrary waveguide bends within the limit of geometrical optics [33, 34] or directional antennas, flat lenses and beam bends [16]. Regarding plasmonic systems, conformal and quasiconformal transformations have been employed to design light-harvesting [35] devices and ground-plane cloaks [20].

In the following, we will show how to derive the isotropic EM parameters that correspond to a conformal transformation within the TO framework. Let us start by assuming that the virtual and physical domains are contained in the complex planes  $z = x' + iy'$  and  $w = x + iy$ , respectively. As we are dealing with SPPs, 2D waves extending into the third dimension (the direction perpendicular to the metal–dielectric interface), we can restrict our study to 2D transformations. A 2D coordinate transformation from virtual to physical coordinates can then be described by means of a complex function,

$$w = f(z, \bar{z}) = x(x', y') + iy(x', y'). \quad (13)$$

This transformation is said to be conformal if the function  $f(z)$  depends on  $z$  but not on its conjugate  $\bar{z}$  and is analytical, i.e.  $f'(z)$ , can be defined. Then, the Cauchy–Riemann equations are satisfied ( $\partial x/\partial x' = \partial y/\partial y'$  and  $\partial x/\partial y' = -\partial y/\partial x'$ ). Consequently, the metric tensor of a conformal transformation reduces to a diagonal matrix,

$$\hat{G}^{-1} = g^{11} \cdot \mathbb{I}_{2 \times 2}, \quad \text{where } g^{11} = (g_{11})^{-1} = \frac{\partial^2 x}{\partial x'^2} + \frac{\partial^2 x}{\partial y'^2}. \quad (14)$$

This means that the grid described by the transformation map  $w = f(z)$  is orthogonal, i.e. the angles between coordinate lines are preserved after the mapping. According to the TO rule (4), we calculate the EM parameters of the transformation medium that corresponds to a 2D conformal transformation,

$$\hat{\epsilon}_{\text{TO}}/\epsilon_0 = \hat{\mu}_{\text{TO}}/\mu_0 = \sqrt{g} \hat{G}^{-1} = \begin{pmatrix} 1 & 0 & 0 \\ 0 & 1 & 0 \\ 0 & 0 & \sqrt{g} \end{pmatrix}. \quad (15)$$

Now let us consider the case of an EM wave with the electric field polarized along the  $z$ -axis and the magnetic field in the  $x$ - $y$  plane. The propagation of this wave is determined by the electric permittivity along the  $z$ -axis and the magnetic susceptibility tensor in the  $x$ - $y$  plane. According to the equation above, these are the following,

$$\epsilon_z = \epsilon_0 \sqrt{g}; \quad \hat{\mu} = \mu_0 \mathbb{I}_{2 \times 2}. \quad (16)$$

This set of parameters is equivalent to an isotropic refractive index,

$$n = \sqrt{\epsilon_z \mu} = n_0 g^{1/4}, \quad (17)$$

where  $n_0 = \sqrt{\epsilon_0 \mu_0}$  is the background refractive index. If, on the other hand, the EM wave is polarized with the magnetic field along the  $z$ -axis, then  $\epsilon = \epsilon_0$ ,  $\mu_z = \mu_0 \sqrt{g}$  and  $n = \sqrt{\epsilon \mu_z} = n_0 g^{1/4}$ . Note that, as shown in the appendix, our approach leads to the same result as the optical conformal mapping technique based on Helmholtz's equation [4]. Therefore, for problems where the two polarizations can be treated separately, a 2D conformal transformation leads to an isotropic transformation medium, with a refractive index defined by (17). On the other hand, SPPs need to be considered separately as their dispersion relation depends on the electric permittivity and the magnetic permeability rather than on the refractive index. However, we will show in the following that the propagation of a SPP in a medium with the exact diagonal anisotropic parameters (15) is very similar to that in a medium with the approximate isotropic refractive index (17) for a given conformal transformation.

Thus, conformal transformations lead to transformation media described by isotropic refractive indexes. However, an analytical conformal transformation is not known for every desired functionality. In those cases, quasiconformal maps are useful for designing TO media based on isotropic materials. They constitute a subset of coordinate transformations,  $w = f(z, \bar{z})$ , that satisfy fewer requirements than conformal transformations. In particular, they can depend on  $z$  and  $\bar{z}$ . In contrast to conformal transformations, quasiconformal transformations map squares in the original space to rectangles of constant aspect ratio in the transformed space. Since they are generated numerically through the minimization of, for instance, the *modified-Liao* or *Winslow* functionals [36, 37], they are able to treat arbitrarily complex boundaries. A quasiconformal map is the optimal map of minimum anisotropy for a given domain, a fact that can be used to design isotropic transformation media. In [15], a quasiconformal map for

a ground-plane cloak was obtained by minimizing the *modified-Liao* functional with sliding boundary conditions. Applying this idea, several invisibility ground-plane cloaks operating at optical [38, 39] and microwave [40] frequencies were fabricated out of isotropic dielectric materials and a non-resonant metallic metamaterial, respectively.

In this work, we have made use of a recently proposed [17, 18] approach to quasiconformal mapping generation that does not need functional minimizations. This method takes advantage of the fact that the transformation functions,  $x'(x, y)$  and  $y'(x, y)$ , that minimize the *Winslow* functional also solve Laplace's equation,

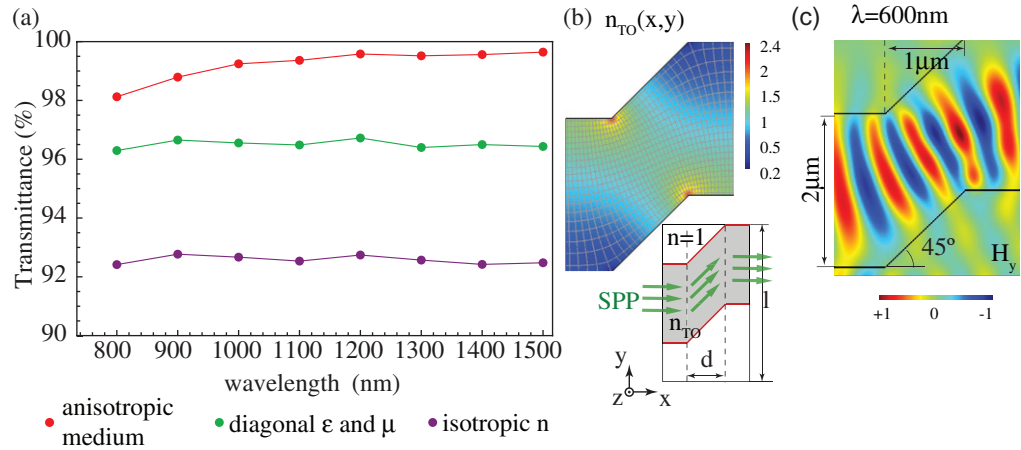
$$\nabla^2 x' = 0; \quad \nabla^2 y' = 0, \quad (18)$$

where the Laplacian, taken in the physical space, is acting on the virtual coordinates. Therefore, solving Laplace's equation in to physical domain subject to sliding boundary conditions,  $\vec{n} \cdot \vec{\nabla} x'^i$ , leads to a quasiconformal map. Once the functions  $x'(x, y)$  and  $y'(x, y)$  are obtained, the gradients of the transformation can be computed in order to construct the inverse Jacobian matrix,  $\hat{A}^{-1} = \partial x^i / \partial x'^i$ . By inverting it, the Jacobian matrix needed for the TO procedure is obtained. Now, assuming that the anisotropy of the quasiconformal mapping is negligible, we can approximate its metric tensor by a diagonal matrix and define the transformation medium by means of (15). Again, for problems where the polarization state of the EM wave is well defined, an isotropic refractive index can be defined following (17). In this way, a quasiconformal transformation can be used to design an isotropic TO medium defined by the index profile  $n = g^{1/4}$ .

### 3.1. Isotropic SPP shifter

As a first example of a plasmonic device based on isotropic dielectrics, let us consider the design of a SPP parallel shifter using a quasiconformal mapping. As in the previous examples, a TO device will be placed on top of the surface through which the SPP travels. In order to design an isotropic shifter with the same functionality as the anisotropic one previously considered, we start by defining the geometry shown in the inset panel of figure 6(b). The transformation medium, whose top view is shown in gray, is divided into three regions: an entrance for the SPP, of width  $l/2$ , at the left; the shifting region (at  $45^\circ$ ), of length  $d$ ; and an exit region at the right. Then, we solve Laplace's equations within the gray region with sliding boundary conditions  $\vec{n} \cdot \vec{\nabla} x'$  at the lower and upper boundaries and  $\vec{n} \cdot \vec{\nabla} y'$  at the left and right boundaries. The resulting quasiconformal map is plotted in figure 6(b), where the grid corresponds to lines of  $x'(x, y) = \text{constant}$  and  $y'(x, y) = \text{constant}$ . Following the method described above, we obtain an isotropic refractive index profile that varies between 0 and 3.5 (color map in figure 6(b)).

The transmittance curve in figure 6(a) shows the results obtained from 3D simulations of the isotropic SPP shifter. SPPs at different wavelengths (from 800 to 1500 nm) travel along a gold–vacuum interface and impinge on the transformation medium placed on top of the gold surface. As we have previously shown, a transformation medium in the metal is not needed. The size of the device is the same as for the anisotropic shifter discussed above. Three different transmittance spectra have been calculated. The green and purple lines show the transmittance through the transformation medium resulting from the quasiconformal transformation. While the green line corresponds to the diagonal  $\hat{\epsilon}_{\text{TO}}$  and  $\hat{\mu}_{\text{TO}}$  given by (15), the purple line corresponds to the index profile  $n(x, y)$  calculated according to (17) and shown in (b). On the other hand, the red line shows the transmittance of the anisotropic shifter (the same as in figure 3), so that the



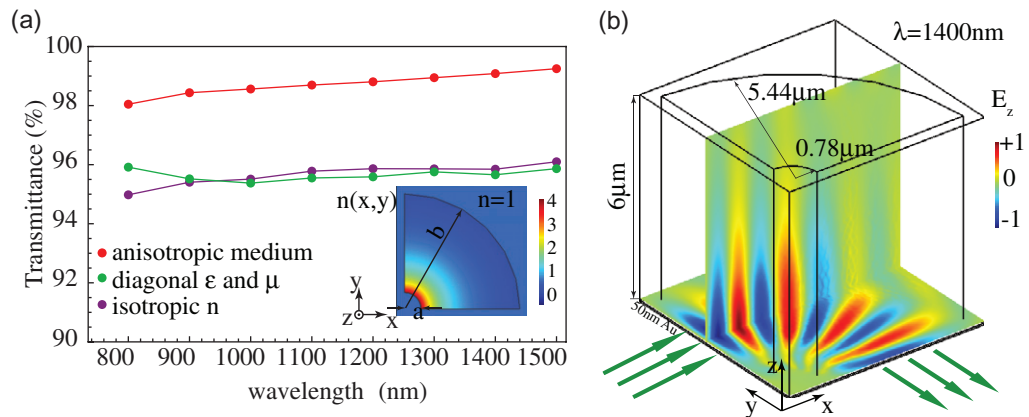
**Figure 6.** Simulation results of an isotropic SPP parallel shifter. (a) Transmittance through the shift for SPPs at different wavelengths. The red line shows the transmittance through a transformation medium characterized by anisotropic parameters (the same as in figure 3). The green and purple lines correspond to a parallel shifter characterized by the diagonal  $\hat{\epsilon}_{TO}$  and  $\hat{\mu}_{TO}$  and the isotropic refractive index, respectively, both retrieved from the quasiconformal transformation. For all of the cases, the TO parameters are implemented in the dielectric side only. (b) Quasiconformal map (grid) and refractive index profile (color map) of the device. The inset shows the geometry layout. (c) Magnetic field,  $H_y$ , of a SPP at 600 nm traveling through the isotropic shifter after implementing the index shown in (b).

efficiency of both approaches can be compared. Whereas the red line takes transmission values above 98%, the green and purple lines lie below, namely around 96 and 92%, respectively. There are two main reasons for this feature. Firstly, the fact that the transformation is quasiconformal leads to an impedance mismatch at the interfaces to free space, causing losses and lowering the green and purple curves. Secondly, the purple curve shows the lowest values in transmittance because when  $\hat{\epsilon}_{TO}$  and  $\hat{\mu}_{TO}$  are replaced by an isotropic index, the dispersion relation of the SPP is affected. In this case, the wave fronts of the SPP are distorted in order to follow the vertical lines of the quasiconformal map shown in panel (b). This feature can be seen in figure 6(c), where a SPP at 600 nm is guided through an isotropic beam shifter. Despite the fact that an isotropic index reduces the transmittance, shifting the SPP is nicely accomplished.

### 3.2. Isotropic SPP bend

A beam bend of the same characteristics as that discussed in section 2.3 can also be realized with isotropic materials. By means of a conformal transformation, a more realistic optical device that bends the SPP propagation direction by a right angle can be designed. The anisotropic parameters (10), yielded by the transformation (9), are replaced by an isotropic refractive index if a conformal transformation is made [16],

$$n(r) = \frac{2b}{\pi r}. \quad (19)$$

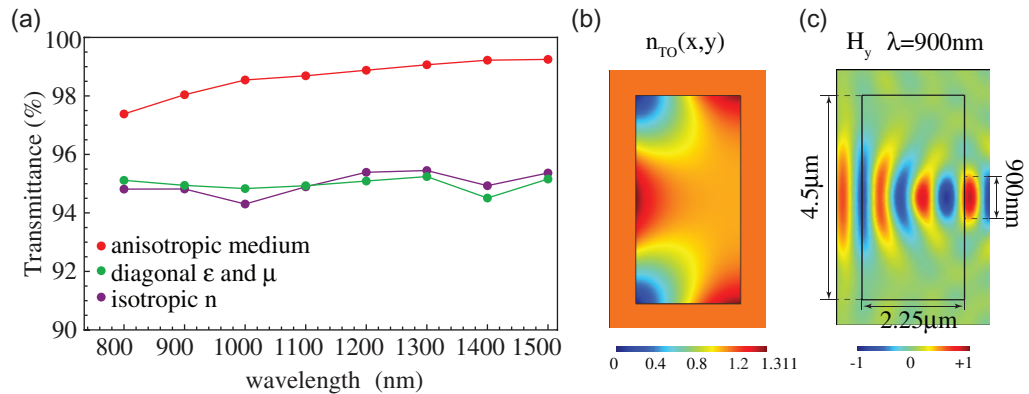


**Figure 7.** Simulation results of a SPP bend characterized by an isotropic refractive index. (a) Transmittance through the bend for SPPs at different wavelengths comparing bends with anisotropic, diagonal and isotropic parameters. The red line corresponds to the case of a transformation medium characterized by anisotropic parameters (the same as in figure 4). The green and purple lines stand for a conformal transformation: the green curve for transmittance resulting from diagonal parameters and the purple curve for the isotropic refractive index (top view plotted in the inset). In all cases, the TO parameters are implemented in the dielectric side only. The geometrical parameters are the same as in figure 4. (b) Electric field,  $E_z$ , of a SPP at 1400 nm traveling through the isotropic bend.

As illustrated in the inset of figure 7(a), the transformation medium, characterized by  $n(r)$ , is a cylindrical shell,  $a < r < b$ , of height  $h_d$  placed on top of the metal surface. This refractive index smoothly decreases from 4.46 at  $r = a$  to 0.67 at  $r = b$ .

We have tested the functionality of the isotropic SPP bend by means of 3D simulations. The curves in figure 7(a) compare the transmittance through the SPP bend with anisotropic parameters (red line) and bends characterized by parameters resulting from a conformal transformation (green and purple lines) over a wavelength range between 800 and 1500 nm. The green line shows the transmittance through a TO medium characterized by the diagonal  $\hat{\epsilon}_{TO}$  and  $\hat{\mu}_{TO}$  calculated from the conformal transformation according to (15). The  $\epsilon_{zz}$  and  $\mu_{zz}$  components of the tensors vary throughout the medium from 0 to 16. The purple line corresponds to a bend characterized by the isotropic refractive index given by (19). In the last two situations, the transmittance is limited to 96% due to impedance mismatch to free space. This feature, not present for the anisotropic case (red curve), arises when conformal transformations are used. As shown in the inset of figure 7(a), the refractive index abruptly changes from  $n = 1$  to  $n(r)$  at the interfaces along the entrance and exit faces of the bend. As a consequence, the SPP suffers reflections that lower the transmission. In this case, the green and purple lines lie very close to each other, meaning that the dispersion relation of the SPP is not affected by changing  $\epsilon_{zz}$  and  $\mu_{zz}$  to  $n$ . The main reason for this is that the parameters resulting from the conformal transformation are smoother and lead to less distorted wave fronts than the quasiconformal transformation in the previous example of a SPP shifter does. Figure 7(b) illustrates the performance of the bend for a Gaussian SPP at 1400 nm. After impinging on the





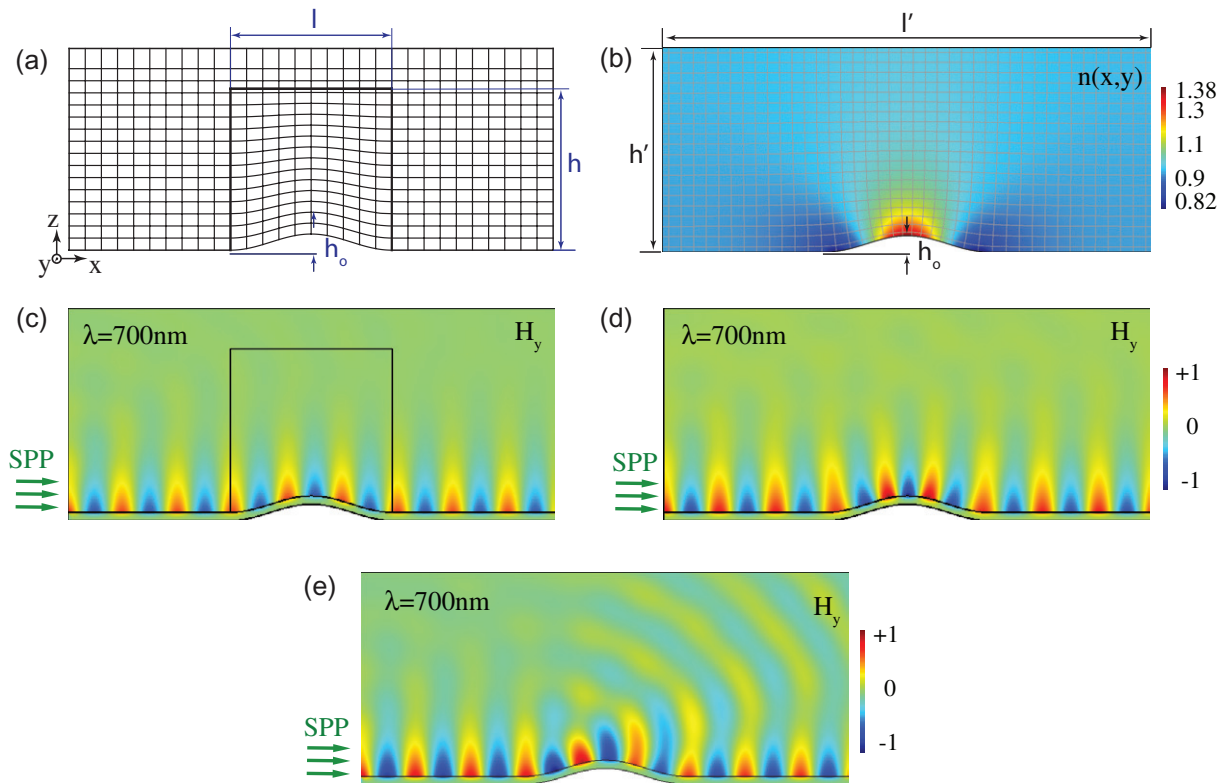
**Figure 8.** The results obtained from 3D simulations of SPPs propagating through a lens. (a) Transmittance spectra through lenses characterized by different EM parameters. Red line: anisotropic  $\hat{\epsilon}_{TO}$  and  $\hat{\mu}_{TO}$  (the same as in figure 5). Green line: diagonal  $\hat{\epsilon}_{TO}$  and  $\hat{\mu}_{TO}$  resulting from a conformal transformation according to (15). Purple line: isotropic refractive index resulting from the same conformal transformation. (b) Refractive index profile yielded by the conformal transformation. (c) Top view of the  $y$ -component of the magnetic field. A SPP travels through a lens characterized by the refractive index shown in panel (b) and is focused within a width of the order of the wavelength.

device, close to 96% of the SPP is bent in a right angle and leaves the transformation medium through the exit face to continue its propagation through the metal.

### 3.3. Isotropic SPP lens

In this section, we discuss the realization of a SPP lens with isotropic materials. The geometry and purpose of the device are the same as those presented previously (see section 2.4). An isotropic refractive index is obtained if, instead of the transformation given by (11), a conformal transformation between a semicircle and a rectangle is performed. In particular, we will make use of a Schwarz–Christoffel transformation, as described in [16]. The refractive index profile that results from this transformation smoothly varies from 0 to 1.31 and is shown in figure 8(b). To design the SPP lens, a transformation medium with a rectangular cross-section characterized by the index distribution  $n_{TO}(x, y)$  and height  $h_d$  is placed on top of a metal film. The device is surrounded by a vacuum ( $n = 1$ ).

Figure 8 shows the results obtained from 3D simulations of SPPs propagating through the lens. The three transmittance curves in panel (a) compare the functionality of SPP lenses characterized by different EM parameters. The red line shows the best performance as it represents the transmittance through a lens characterized by the anisotropic and singular parameters given by (12) (see figure 5). The green and purple lines correspond to lenses designed by means of a conformal transformation and therefore are situated at lower transmittance values due to impedance mismatch to free space. The green line accounts for the transmittance through a lens with diagonal parameters,  $\hat{\epsilon}_{TO}$  and  $\hat{\mu}_{TO}$ , which are obtained from the conformal transformation according to (15). Only the third component of the tensors diagonal is different from 1, and it varies smoothly from 0 to 1.72. The purple line corresponds to the isotropic



**Figure 9.** Ground-plane cloak for a bump of height  $h_0 = 0.2 \mu\text{m}$  on a gold–vacuum interface infinite in the  $y$ -direction. (a) Coordinate map of the transfinite transformation that leads to a ground-plane cloak characterized by anisotropic  $\hat{\epsilon}_{\text{TO}}$  and  $\hat{\mu}_{\text{TO}}$ . The cloak, of length  $l = 2 \mu\text{m}$  and height  $h = 2 \mu\text{m}$ , is placed in the dielectric side of the interface. (b) Refractive index profile (color map) resulting from the quasiconformal map shown by the grid. The size of the cloak is given by  $l' = 6 \mu\text{m}$  and  $h' = 2.5 \mu\text{m}$ . (c, d) Magnetic field,  $H_y$ , of a SPP at 700 nm traveling through the anisotropic and isotropic cloaks shown in (a) and (b), respectively. (e) SPP scattering on a gold bump when the cloak is not present.

refractive index retrieved from the conformal transformation according to (17) and is shown in panel (b). The two cases considered for the conformal transformation (diagonal  $\hat{\epsilon}_{\text{TO}}$  and  $\hat{\mu}_{\text{TO}}$  and isotropic  $n$ ) give close transmittance results in this example, similarly to the SPP bend results above. Panel (c) shows the field pattern of a SPP traveling through the isotropic lens as its wave fronts are focused on the exit face.

### 3.4. SPP ground-plane cloak

Finally, let us compare the two approaches to TO that we have presented (anisotropic and isotropic transformation media) as they apply to a ground-plane cloak for SPPs. This cloak was first proposed for mimicking a flat reflective surface under plane wave illumination [15]. Given that TO is valid for any kind of EM waves, a ground-plane cloak can also be used to suppress the scattering of a SPP from a bump on the metallic surface along which the plasmon propagates

(see figure 9). Thus, the SPP appears to have travelled along a flat metal surface although it is physically traveling along the bump. Let us consider a SPP propagating in the  $x$ -direction along a surface placed in the  $x$ - $y$  plane. In order to cloak a bump defined by the equation  $z(x) = h_0 \cos^2\left(\frac{\pi}{l}x\right)$ , we make a transformation in the  $x$ - $z$  plane (perpendicular to the interface) from a rectangular region sitting on a metal surface to a region whose bottom boundary is lifted following the surface of the bump. We have considered two different transformations that yield the same functionality: a transfinite transformation, figure 9(a), and a quasiconformal mapping, figure 9(b).

The transfinite transformation shown in panel (a) was made in the dielectric side of the interface in a box sized  $l \times h$  and has an analytical expression (details can be found in [19]). Since it is not a conformal transformation, the EM parameters,  $\hat{\epsilon}_{\text{TO}}$  and  $\hat{\mu}_{\text{TO}}$ , retrieved for the corresponding transformation medium are anisotropic. When the cloak is placed on top of the surface, a SPP smoothly travels across the bump without any scattering. Figure 9(c) shows the magnetic field component,  $H_y$ , of a SPP at 700 nm travelling through a bump of height  $0.2 \mu\text{m}$ . On the other hand, we have calculated the isotropic index profile resulting from the quasiconformal map shown in panel (b). In this case, the transformation medium is sized  $h' \times l'$ . The quasiconformal map was generated by solving Laplace's equation with sliding boundary conditions  $\vec{n} \cdot \vec{\nabla}x'$  (at the lower and upper boundaries) and  $\vec{n} \cdot \vec{\nabla}y'$  (at the left and right boundaries). The effect of a ground-plane cloak is achieved by setting  $y' = 0$  at the lower boundary so that the bump is mapped onto a flat surface. Then the refractive index was calculated following the procedure described above. It ranges from 0.82 to 1.38 and the background value ( $n = 1$ ) is recovered at the outer boundaries of the cloak. This means that the cloak is impedance-matched to vacuum, a fact that suppresses possible reflections at the interfaces. A SPP traveling through the isotropic cloak is illustrated in panel (d), where the SPP smoothly passes the bump. In both cases (panels (c) and (d)), the wave fronts follow the transformed grid. In contrast, if no cloak is placed on top of the bump, the SPP suffers strong scattering, as shown in figure 9(e).

#### 4. Conclusions

In conclusion, we have demonstrated that the application of the concept of transformation optics to plasmonics brings into the field unprecedented control over the flow of SPPs. Based on this approach, we have presented the necessary tools for designing feasible plasmonic devices. When considering SPPs propagating on metal–dielectric interfaces, a direct application of transformation optics would imply a manipulation of the optical properties of both the metal and dielectric materials. However, we have shown that modifying only the dielectric side leads to almost perfect functionalities because most of the SPP energy is carried within the dielectric medium at optical frequencies. Having proved this feature within a general framework in which the EM parameters are anisotropic, we then presented plasmonic devices that can be made out of isotropic dielectric materials. Making use of conformal and quasiconformal transformations, control over SPP flow can be achieved by placing a structured dielectric layer on top of the metal surface. Regarding practical implementations, this fact would render low loss and broadband performances. For instance, holes could be drilled in a dielectric layer to effectively mimic an isotropic refractive index. We expect that the flexibility of our methodology will ensure many different theoretical proposals and experimental realizations of plasmonic devices based on transformation optics.

## Acknowledgments

This work was sponsored by the Spanish Ministry of Science under projects MAT2009-06609-C02 and CSD2007-046-NanoLight. PAH acknowledges financial support from the Spanish Ministry of Education through grant no. AP2008-00021.

## Appendix. Optical conformal mapping

In the limit of ray optics, where the refractive index  $n(x, y)$  is nearly constant over the scale of a wavelength  $\frac{2\pi}{|k|}$ , the field amplitude for each polarization satisfies Helmholtz's equation. In virtual space ( $z = x' + iy'$ ), this equation reads

$$\left(\nabla'^2 + \frac{\omega^2}{c^2} n^2\right) \psi = 0, \quad (\text{A.1})$$

where the Laplacian is  $\nabla'^2 = \partial^2/\partial x'^2 + \partial^2/\partial y'^2$ . Let us now consider a transformation  $w = w(z)$  from virtual to physical space ( $w = x + iy$ ) such that it is conformal. Making use of the relation between the Laplacian in virtual and physical spaces,  $\nabla'^2 = |dw/dz|^2 \nabla^2$ , we can transform Helmholtz's equation to physical space,

$$\left(\nabla^2 + \frac{\omega^2}{c^2} \left|\frac{dz}{dw}\right|^2 n^2\right) \psi = 0. \quad (\text{A.2})$$

This equation is left invariant if we choose a refractive index of the form [4]

$$n = \left|\frac{dz}{dw}\right| n', \quad (\text{A.3})$$

where  $n'$  is the background refractive index,  $n_0$ . By means of the Cauchy–Riemann equations, we can express the refractive index in terms of the metric tensor of a conformal transformation,

$$n = n_0 \left|\frac{d}{dw}(x' + iy')\right| = n_0 \left|\frac{\partial x'}{\partial x} + i \frac{\partial y'}{\partial x}\right| = n_0 \sqrt{\frac{\partial^2 x'}{\partial x^2} + \frac{\partial^2 y'}{\partial x^2}} = n_0 g^{1/4}, \quad (\text{A.4})$$

which is the same expression for the refractive index obtained according to TO (17).

## References

- [1] Pendry J B, Schurig D and Smith D R 2006 *Science* **312** 1780
- [2] Leonhardt U and Philbin T G 2006 *New J. Phys.* **8** 247
- [3] Ward A J and Pendry J B 1996 *J. Mod. Opt.* **43** 4
- [4] Leonhardt U 2006 *Science* **312** 1777
- [5] Rahm M, Cummer S A, Schurig D, Pendry J B and Smith D R 2008 *Phys. Rev. Lett.* **100** 063903
- [6] Rahm M, Roberts D A, Pendry J B and Smith D R 2008 *Opt. Express* **16** 11555
- [7] Kwon D and Werner D H 2008 *New J. Phys.* **10** 115023
- [8] Roberts D A, Rahm M, Pendry J B and Smith D R 2008 *Appl. Phys. Lett.* **93** 251111
- [9] Rahm M, Schurig D, Roberts D A, Cummer S A, Smith D R and Pendry J B 2008 *Photonics Nanostruct. Fundam. Appl.* **6** 87
- [10] Schurig D, Pendry J B and Smith D R 2007 *Opt. Express* **18** 14772

- [11] Kildishev A V and Shalaev V M 2008 *Opt. Lett.* **33** 43
- [12] Kwon D and Werner D H 2008 *Opt. Express* **16** 18731
- [13] Ziolkowski R W and Engheta N 2006 *Metamaterials: Physics and Engineering Explorations* (New York: Wiley)
- [14] Ramakrishna S A 2005 *Rep. Prog. Phys.* **68** 449
- [15] Li J and Pendry J B 2008 *Phys. Rev. Lett.* **101** 203901
- [16] Schmiele M, Varma V S, Rockstuhl C and Lederer F 2010 *Phys. Rev. A* **81** 033837
- [17] Chang Z, Zhou X, Hu J and Hu G 2010 *Opt. Express* **18** 6089
- [18] Hu J, Zhou X and Hu G 2009 *Opt. Express* **17** 1308
- [19] Huidobro P A, Nesterov M L, Martín-Moreno L and García-Vidal F J 2010 *Nano Lett.* **10** 1985
- [20] Liu Y, Zentgraf T, Bartal G and Zhang X 2010 *Nano Lett.* **10** 1991
- [21] Kadic M, Guenneau S and Enoch S 2010 *Opt. Express* **18** 12027
- [22] Renger J, Kadic M, Dupont G, Aćimović S, Guenneau S, Quidant R and Enoch S 2010 *Opt. Express* **18** 15757
- [23] Zentgraf T, Liu Y, Mikkelsen M H, Valentine J and Zhang X 2011 *Nat. Nanotechnol.* **5**(8) 563–4
- [24] Barnes W L, Dereux A and Ebbesen T W 2003 *Nature* **424** 824
- [25] Maier S A and Atwater H A 2005 *J. Appl. Phys.* **98** 011101
- [26] Bozhevolnyi S I, Genet C and Ebbesen T W 2008 *Phys. Today* **61**(5) 44–50
- [27] Gramotnev D K and Bozhevolnyi S I 2010 *Nat. Photonics* **4** 83
- [28] Baumeier B, Leskova T A and Maradudin A A 2009 *Phys. Rev. Lett.* **103** 246803
- [29] Edwards B, Alú A, Silveirinha M G and Engheta N 2009 *Phys. Rev. Lett.* **103** 153901
- [30] Smolyaninov I I, Hung Y J and Davis C C 2008 *Opt. Lett.* **33** 1342
- [31] Schurig D, Mock J J, Justice B J, Cummer S A, Pendry J B, Starr A F and Smith D R 2006 *Science* **314** 977
- [32] Yan M, Ruan Z and Qiu M 2007 *Phys. Rev. Lett.* **99** 233901
- [33] Landy N I and Padilla W J 2009 *Opt. Express* **17** 14872
- [34] Mei Z L and Cui T J 2009 *J. Appl. Phys.* **105** 104913
- [35] Aubry A, Lei D Y, Fernandez-Dominguez A I, Sonnefraud Y, Maier S A and Pendry J B 2010 *Nano Lett.* **10** 2574
- [36] Knupp P and Steinberg S 1994 *Fundamentals of Grid Generation* (Boca Raton, FL: CRC Press)
- [37] Farrashkhalvat M and Miles J P 2003 *Basic Structured Grid Generation* (Amsterdam: Elsevier)
- [38] Valentine J, Li J, Zentgraf T, Bartal G and Zhang X 2009 *Nat. Mater.* **8** 568
- [39] Gabrielli L H, Cardenas J, Pointras C B and Lipson M 2009 *Nat. Photonics* **43** 461
- [40] Liu R, Ji C, Mock J J, Chin J Y, Cui T J and Smith D R 2009 *Science* **323** 366